

An Update on the TES and THEMIS Retrieval Datasets

Michael Smith

NASA Goddard Space Flight Center

MY 34, Ls=240°

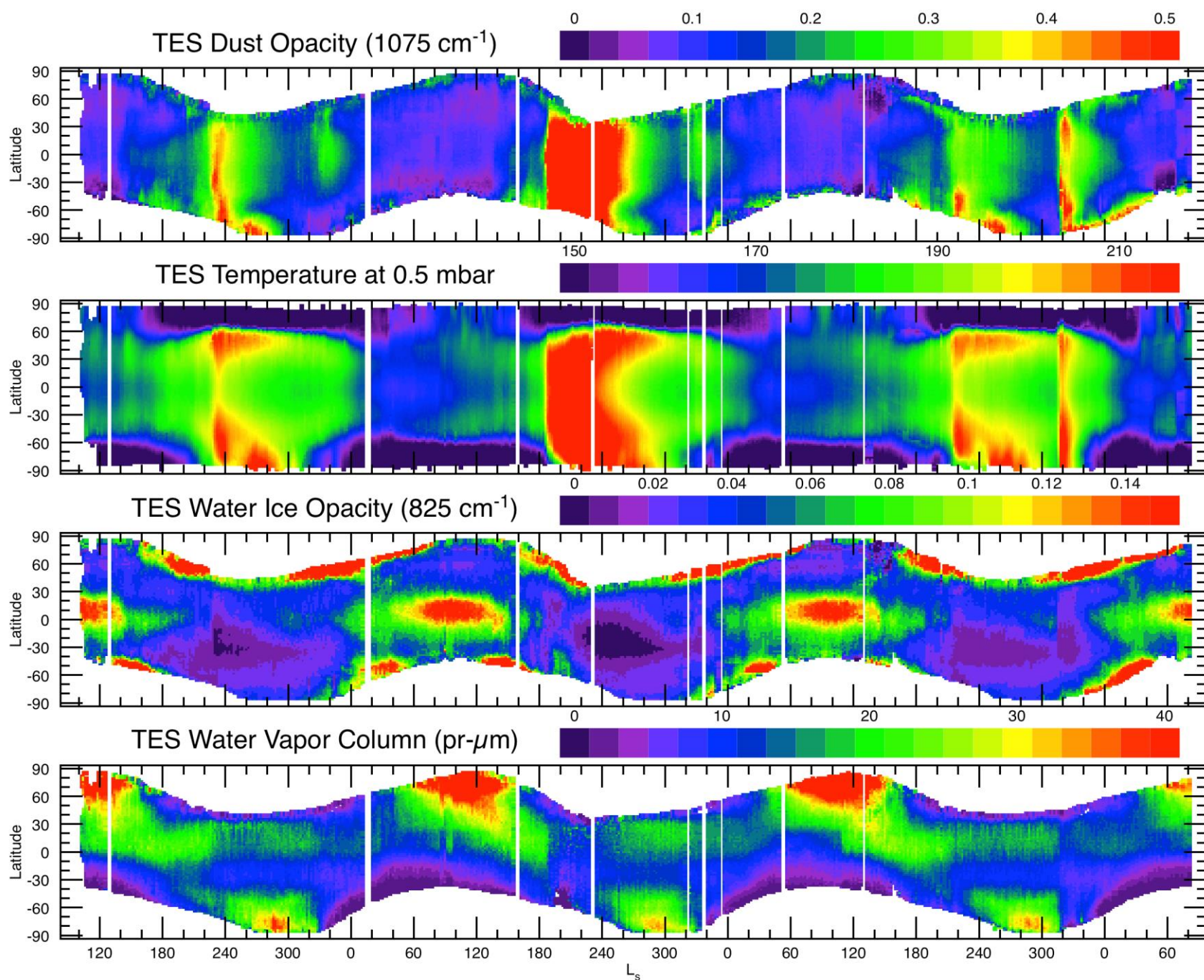
TES

Quantities: Surface Temperature, Atmospheric Temperature Profiles (0 – 50 km), Dust Optical Depth, Water Ice Optical Depth, Water Vapor Column Abundance

Date Range: MY 24, Ls=104° to MY 27, Ls=81°

What is New:

- Criterion for accepting a retrieval changed from surface temperature being high enough to thermal contrast being great enough. This allows a little added latitude coverage.
- Fixed a bias in optical depth when surface temperature low.
- Fixed an inconsistency in the determination of surface temperature for different observing mode.



Mars Year 24

25

26

27

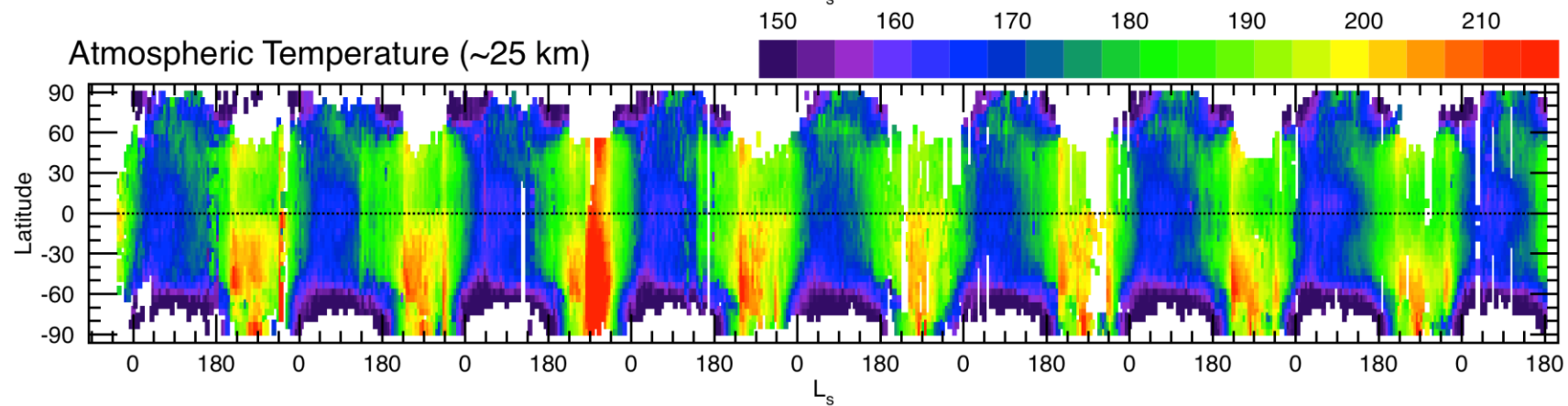
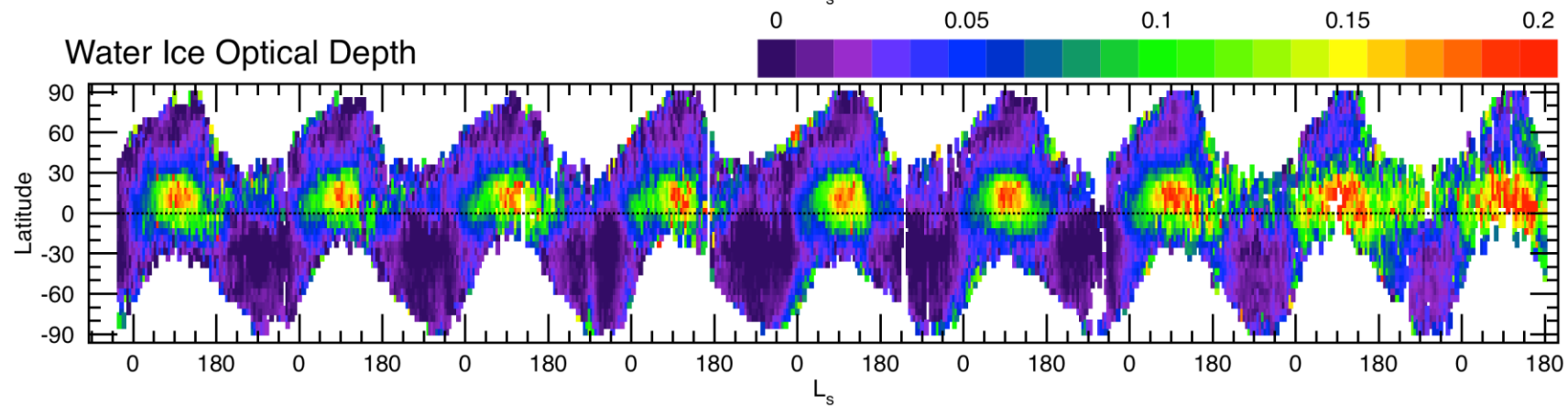
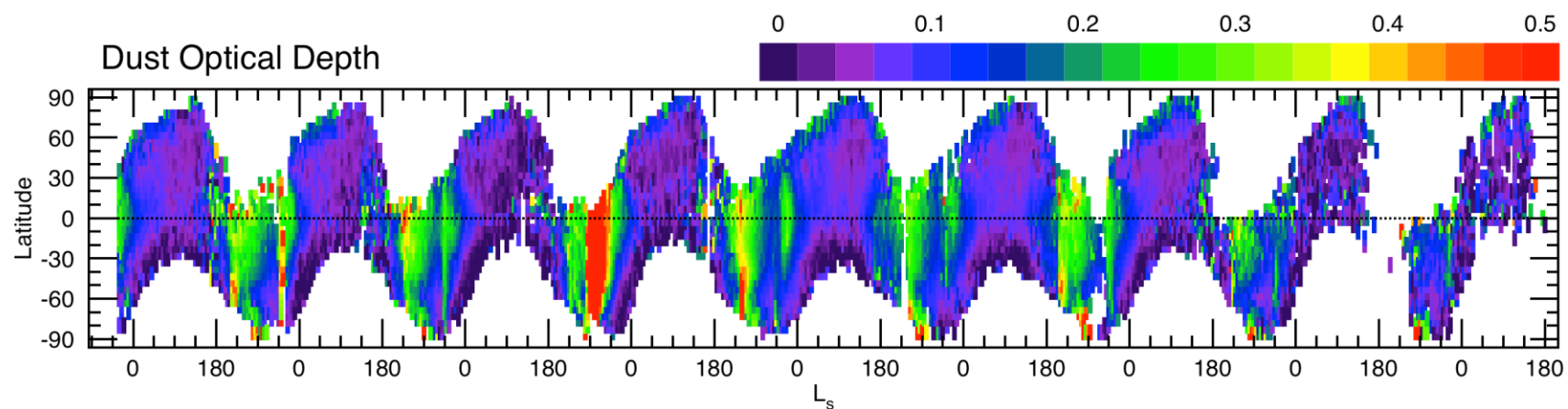
THEMIS

Quantities: Surface Temperature, Atmospheric Temperature (at ~25 km), Dust Optical Depth, Water Ice Optical Depth

Date Range: MY 25, Ls=330° to *the present*

What is New:

- Continue to get new observations, extending timeline to almost 9 Mars Years.
- Observations at later local times, approximately 7:00 AM/PM.
- Criterion for accepting a retrieval changed from surface temperature being high enough to thermal contrast being great enough.



Mars Year 26 27 28 29 30 31 32 33 34